

FITTING INSTRUCTIONS

Hand Guards

Moto Guzzi V7 Special Edition 23+

Part No. 380-M104

KIT 108

Qty	Description	Office Use	Item No
1	Hand Guards		1
2	Brackets	9003-HG006B	2
2	M6 Flange Nut	17	3
2	M6 FLAT WASHER - 12MM O.D	20	4
2	M6 x 20 Flange Screw	31	5
2	Spacers	34	6
2	M8 Rubber Washer	224	7
2	Powerbronze Bar Ends	251	8
2	M8x30 OD penny washer	278	9
2	Small conical spacer	#123A	10
2	Rubber Grommets	#135	11
2	Powerbronze Label—Small	#158	12

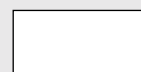


Prior to using this product, please refer to our Terms and Conditions on the website.

When fitting your Powerbronze product it will help you to use your motorcycle manual for disassembly and reassembly of your motorcycle. You will need a set of spanners, sockets, torques keys, Allen keys & screwdrivers.

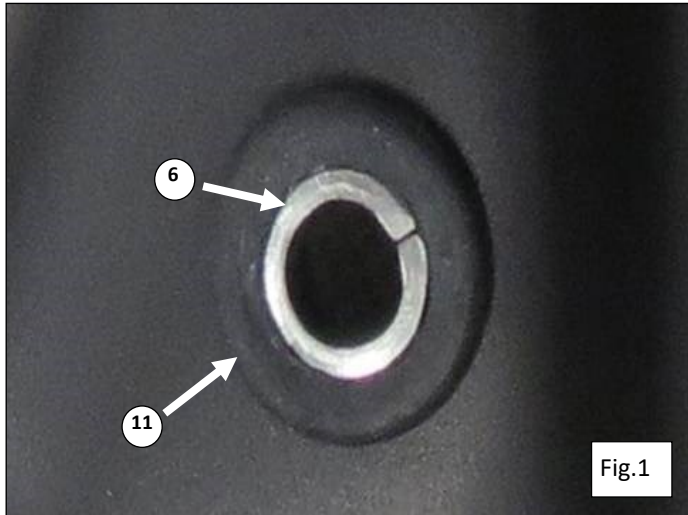
Taking a few moments to check the parts list and familiarizing yourself with the kit will make fitting easier.

Remember; whenever a part is fixed by using several nuts, bolts or screws they should be left loose until all are in place and then tightened.



1. Remove protective film from Powerbronze hand guards (1).

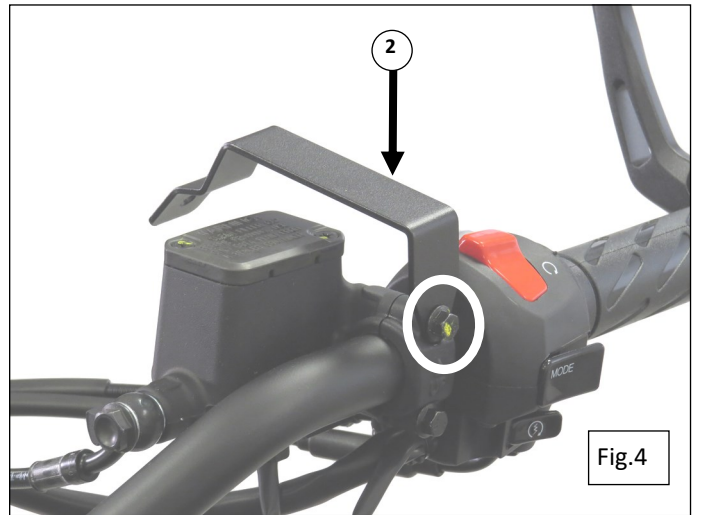
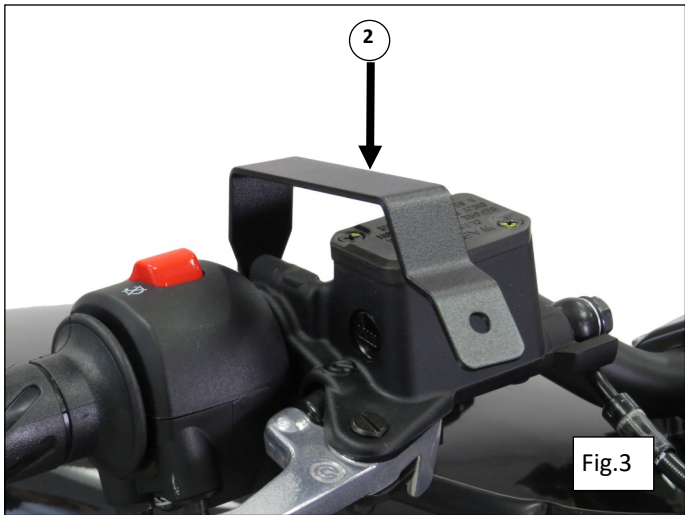
2. Fit rubber grommets (11) into hand guards and metal spacers (6) into grommets as per Fig.1



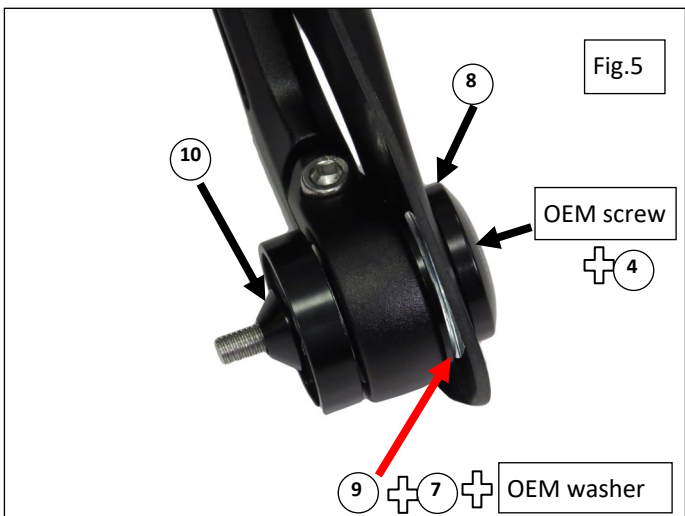
3. Remove original bar ends and mirrors. Fig.2



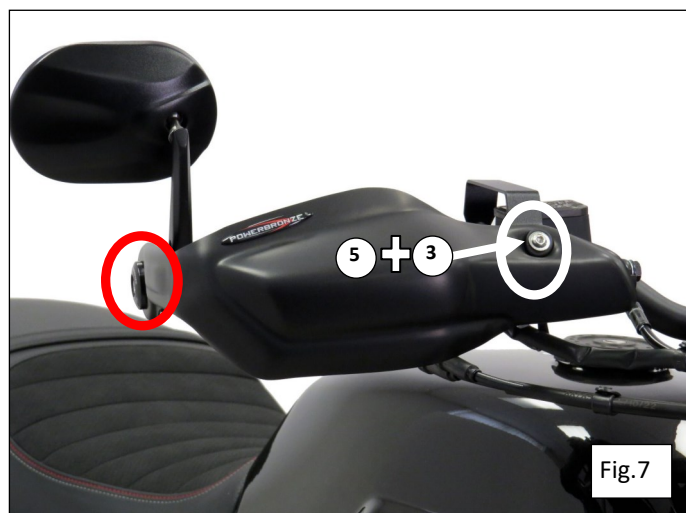
4. Fit brackets (2) to brake / clutch lever clamp bolts as shown in Fig.3 & Fig.4



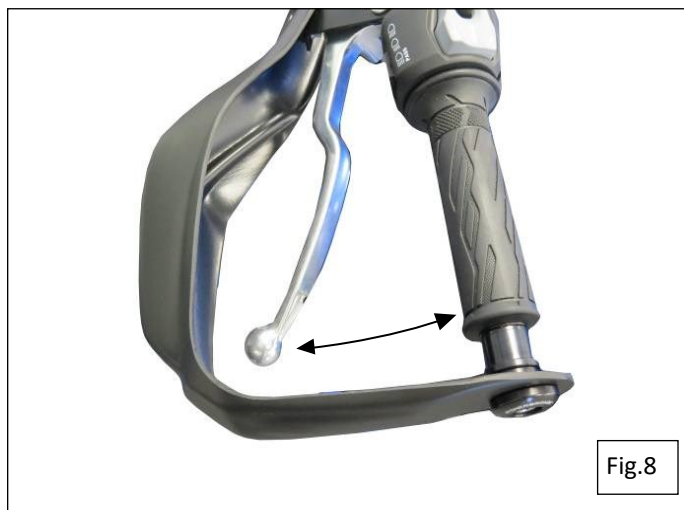
5. Assemble hand guards using components shown in Fig.5 with original mirror assembly and original screw before fitting to handlebars as shown Fig.6



6. Fit the hand guards to the brackets using M6 x 20 flange screws (5) and M6 Flange nut (3) inside hand guards as shown in Fig 7. Tighten bar end screws.



7. Check lever operation insuring no resistance and that they clear the hand guards. Fig. 8



NOTE:

The best position for the hand guards can be achieved by rotating the bar end and rotating the LH and RH Brackets.

IMPORTANT: Always check alignment of hand guards and mounting bolt tension periodically.